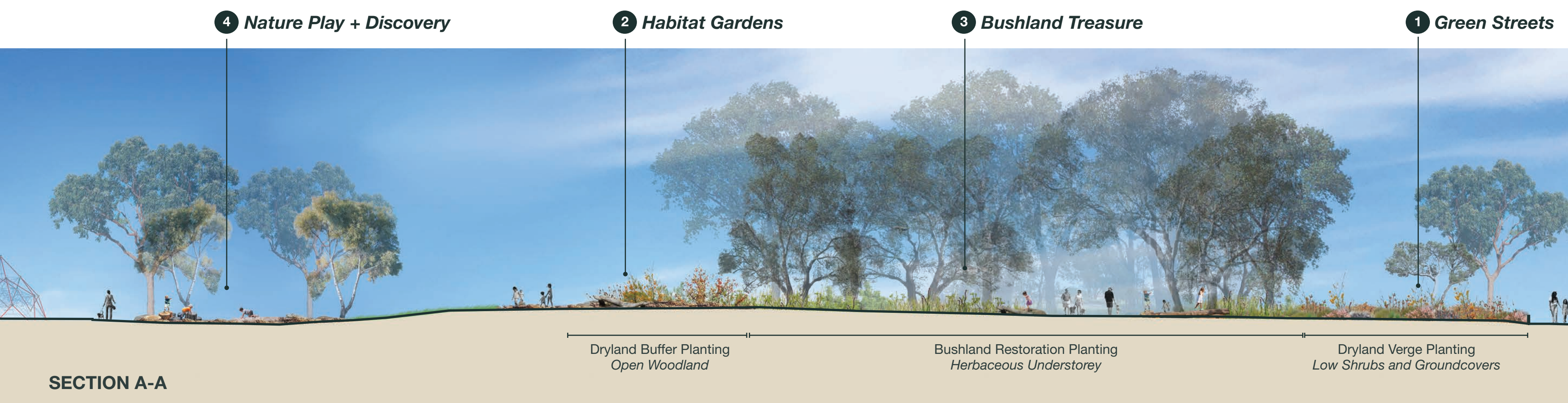
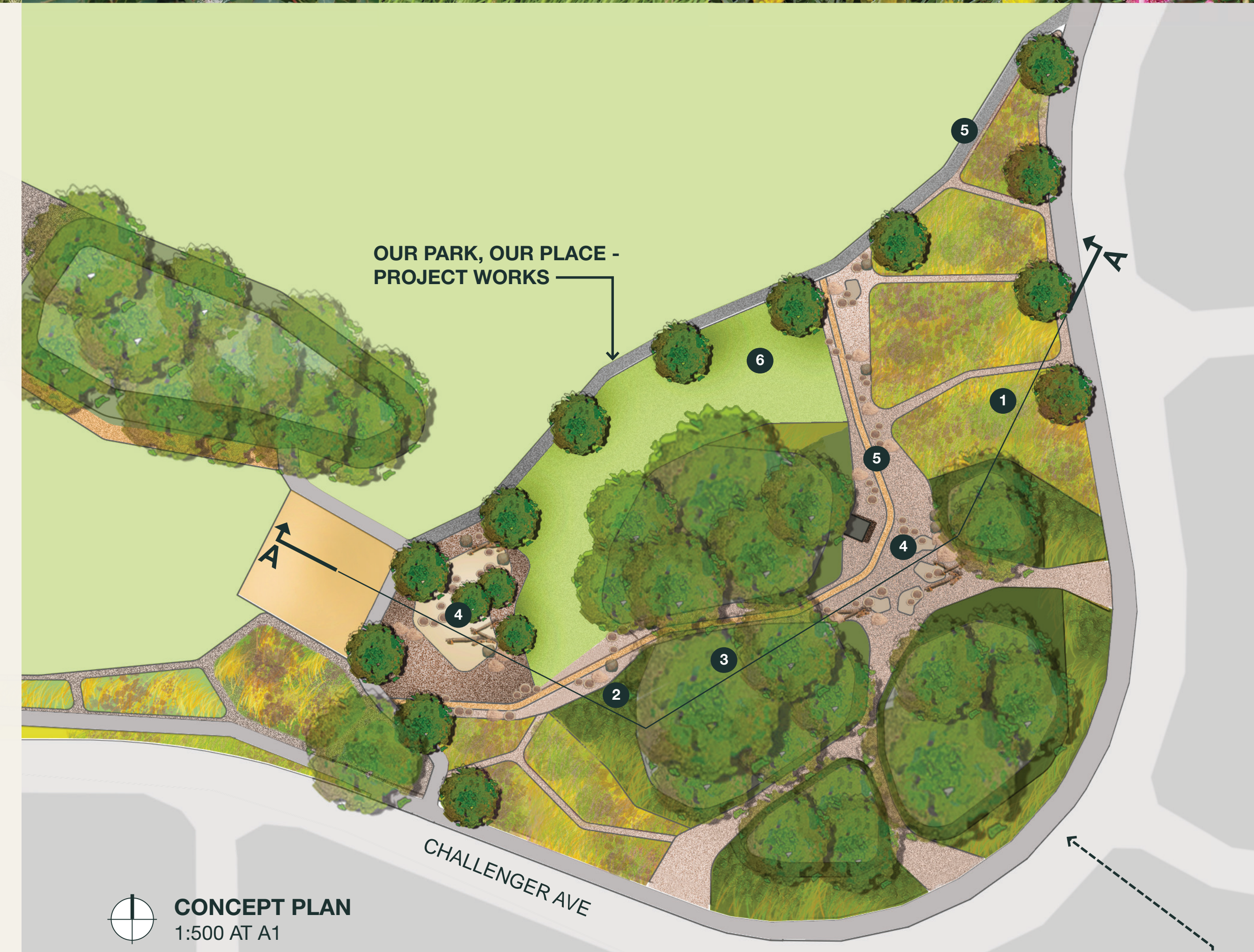


Our Park, Our Place strengthening connections beyond the park and into the community, collaboratively building cooling, biodiverse urban green places.

LEGEND

- 1 Green Streets**
Create continuous shady canopy of trees with understorey of biodiverse flowering shrubs and groundcovers along verges, park perimeters and streetscapes. To learn more on how you can take part in this, see City of Bayswater's website including their *Urban Forest Strategy*, *Collective Local Biodiversity Strategy*, *Request a Free Street Tree*, *Verge Greening Guidelines*, and Water Corporation's *Creating a Waterwise Verge*.
- 2 Habitat Gardens**
Create waterwise landscaping with hydrozoning, reducing grassed and paved areas and replacing with native plants, mulched areas, rocks and logs for habitat creation, including log hollows, bird baths and insect hotels amongst the plantings.
- 3 Bushland Treasure**
Protect and enhance remnant vegetation areas. Build on fringing areas with rich herbaceous understorey.
- 4 Nature Play + Discovery**
Enhance natural bushland clearings and create shady rest points along a nature and discovery play trail, integrating interpretive art, rocks and logs to explore, and providing habitat for local wildlife. Include environmental and cultural interpretation at key locations, sharing knowledge and enhancing connection and understanding of the site and surrounds.
- 5 Access + Connection**
Provide connected path network, including improved universally accessible path connections, working towards a full loop around the park in future works. Consolidate clearings through remnant bushland with primary links clearly defined and smaller clearings revegetated.
- 6 Open Grass**
Consolidate underutilised areas of grass and retain large open areas for diverse activities and users.



OUR PARK, OUR PLACE

ARBOR PARK, MORLEY - CONCEPT OCTOBER 2020

ARBOR PARK CONCEPT PLAN

Future stages and projected works timeline to be determined pending approval and funding.

- Green Streets**
Create shady streets and park edges with diverse native planting and trees
- Habitat Gardens**
Enhance understorey planting and transition to hydrozoning of grass areas
- Bushland Treasure**
Protect and enhance remnant vegetation areas
- Seasonal Water Integration**
Enhance habitat potential and visual amenity of stormwater basin
- Connection + Access**
Provide accessible, connected path network:
 - Connected, concrete pathway loop
 - Crushed stone pathways
 - Consolidated, mulched clearings
- Nature Play + Discovery**
Create connected discovery trail and play nodes, integrating environmental and cultural interpretation
- Open Grass**
Retain large open areas of grass for diverse activities

